

# Start here. Go anywhere.

Boarding Prospectus



Loreto  
Normanhurst



## Acknowledgement of Country

We pay our respect to this ancient Land that breathed life 300 million years ago. A Land that extends from the ridgeline of the Blue Mountains across the soft sandstone plateau to the coast into the ocean. These ridgelines are the water catchment areas. It's where the rain hits first and flows down into our rivers and creeks, rejuvenating the earth and filling waterholes and hanging swamps. A Land kissed by rainbows and home to the tall Blue Gums. We acknowledge this Land as mother to possums, lyrebirds, the laughing kookaburra, the tawny frogmouth and brush turkey. We recognise the deep cultural and spiritual connection of this Land to the peoples of this Country. We honour Elders, those past, present and emerging. We pay respect to all Aboriginal and Torres Strait Islander people within our community.

# Welcome



I'm delighted to share this insight into who we are and how we can partner with your family as you discern the path forward for your daughter's education.

There is a gentle hum of life seven days a week within the boarding community at Loreto Normanhurst, in a loving atmosphere of care and support. Boarding has been integral to Loreto Normanhurst's identity since it was founded as a country boarding school in 1897. Indeed, the Boarding School is referred to as the "heart" of the school; it's part of the whole fabric of Loreto Normanhurst. Today, the Boarding School enriches the diversity of our thriving community by connecting students from all over Australia and the world.

The vision of our foundress, Mary Ward, was that a holistic education be made available to all girls, to grow young women who are "seekers of truth and doers of justice." This mission still resonates with us today as we proudly commit to educating our young women for their time and for the future that awaits them.

A holistic Loreto education places equal emphasis on learning and on building relationships in a caring community. Our unique and robust Loreto Normanhurst Student Growth Model (LNSGM) motivates our students to be life-long learners and critical thinkers dedicated to all areas of our FACE Curriculum – Faith, Academic, Community and Extra-curricular. Guided by an active faith, we prioritise social justice and encourage students to take action in service of their communities.

The Boarding School builds on the holistic care of a Loreto education so our girls can discover and become their true selves with confidence, resilience and independence. As a Boarding School, we cherish our global community of passionate individuals who share a deep enthusiasm for education, and a love of learning and affection for each other.

**Ms Marina Ugonotti**  
**PRINCIPAL**



“Women in  
time to come  
will do much.”

Mary Ward  
1585-1645

# Message from the Director of Boarding

Boarding at Loreto Normanhurst offers a truly unique experience. The laughter, joy and excitement in the corridors and dorms is reflective of the friendships and connections that are formed between our girls and the care and compassion they offer one another.

As a Loreto Normanhurst Boarder, your daughter will build a network of friends from around the state, nation and world. Our families come from all over Sydney and regional NSW, interstate and overseas destinations, and they bring a wealth of cultural and diverse family experiences to our community.


Boarding provides programs and activities, options and possibilities, which foster good relationships – big sisters, mentors and modelled leadership. Together with our families, the individual interests, pursuits and goals of our boarders are encouraged and accommodated.

We work in partnership with our families and community to guide and support the outcomes for our boarders. There are routines and structures to ensure your daughter's journey at Loreto Normanhurst Boarding is an adventure.

I have found my passion and joy caring for, and growing and developing our boarders. I invite you to explore the pages of this Prospectus to find out more about Boarding at Loreto Normanhurst and encourage you to book a tour to visit us onsite.

**Mrs Kate Kovacs**  
**Director of Boarding**



A photograph of three young women in school uniforms (blue blazers, white shirts, and striped ties) smiling and posing in front of a large, ornate brick building with Gothic-style windows. The building has a prominent tower with a crenellated top and a decorative window. The scene is brightly lit, suggesting a sunny day.

“Boarding is what  
makes us Loreto  
Normanhurst”

Bridget

Senior Boarder

Loreto Normanhurst, in the spirit of  
Mary Ward, as a school community:

*Encourages* each student to fulfil  
her academic and personal potential,  
in an atmosphere of freedom, care and  
respect for the individual

*Celebrates* a joyous Christian faith  
which grows from reflection and leads  
to justice

*Develops* independent, articulate and  
compassionate women of integrity

*Propels* servant leaders to respond to  
the needs of the world



# Our values

Freedom

Justice

Sincerity

Verity

Felicity





FOR GENERATIONS OF YOUNG WOMEN,  
HERE IS WHERE IT STARTS.

Loreto Normanhurst is a leading Sydney independent, Catholic Day and Boarding school for girls from Year 5 to 12.

Established in 1897, the school is part of a worldwide network of Loreto schools under the care of the Loreto Sisters (IBVM), and is one of eight Loreto schools in Australia.

Our foundress, Mary Ward, a devout and pioneering English woman who lived from 1585-1645, believed that, "Women in time to come will do much."

We provide opportunities for young women to grow with confidence and compassion, developing modern-day Mary Wards who are ready to take on the world - wherever that may lead them.

“Loreto Normanhurst is a very special school because it has a wonderful sense of *community* and there is no pressure to excel extraordinarily.

You can *be your own person* and the school accepts that and encourages everyone to *flourish* individually.”

Emily Stockwell  
Class of 2021 Boarder



# Graduate Attributes

## A LORETO NORMANHURST GRADUATE IS...



A woman of *conscious faith* who is empathetic, reflective and possesses gentle strength.



A woman of *creativity* who is expressive, imaginative and takes risks.



A woman of *independent thinking* who is curious and a critical enquirer and synthesiser.

“I leave Loreto wishing to utilise the love of learning and love of community instilled in me to inspire positivity in others and contribute to social justice.

Loreto has taught me the importance of strong communication skills, consideration of the opinions and differences of others, and a steadfast belief that ‘I can, and I will.’”

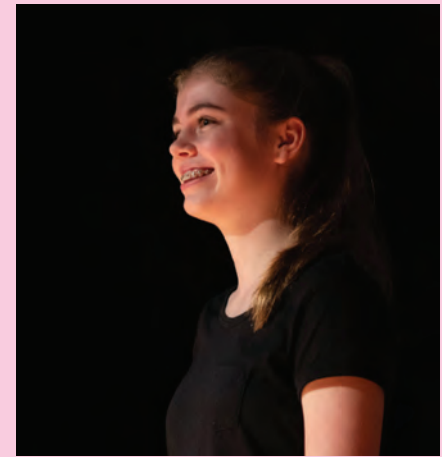
Stephanie Arnold  
Class of 2020



A woman of *grit* who is agile, resilient and adaptable.



A woman of *service* who is a leader and advocate responsive to her context.



A woman of *voíce* who is confident, articulate and considered.

# Aims of Boarding

Our boarders add a unique dimension to our wonderful school and are an integral part of the Loreto Normanhurst community.

The Boarding School develops the girls' growth and development by:

- Providing opportunities to participate in the expression of their faith.
- Providing a variety of experiences to encourage spiritual, physical, social, emotional, moral, and intellectual growth.
- Teaching them to live with and respect others.
- Encouraging them to acknowledge their gifts and talents and share them with others.
- Encouraging self-motivation and self-discipline.
- Providing an environment that allows them to feel safe and cared for.

To ensure the girls are secure in their values system and boundaries, the Boarding School aims to:

- Deepen their commitment to be a woman of understanding, tolerance, empathy, compassion, and resilience.
- Encourage personal responsibility, learning with practical guidance from study and academic supports.
- Create an environment where each boarder learns to value truth and respect for others.
- Encourage and establish high standards of organisation and good routines, punctuality, participation, and care for property and personal appearance.
- Develop leadership and the ability to work as a team.
- Build and foster community between boarders, staff, parents, and the wider Loreto community.

“The best thing about boarding is always being with your friends... they make you feel like you're at *home*.”

Eliza  
Junior Boarder



We invite you to visit our website to explore the Virtual Tour of our Boarding School, or to book a tour onsite for your family. Please visit: [loretonh.nsw.edu.au](https://loretonh.nsw.edu.au)

# Our Secondary School



We invite you to visit our website to explore the Virtual Tour of our Secondary School, or to book a tour onsite for your family. To book, visit: [loretanh.nsw.edu.au/pages/school-tours](https://loretanh.nsw.edu.au/pages/school-tours)

In our Secondary School, we are proud to draw from more than 125 years of experience in educating young women of grit, optimism and integrity through our award-winning Loreto Normanhurst Student Growth Model (LNSGM) for learning and pastoral care.

All students in Year 7 to 12 have access to our flexible learning spaces, innovative resources and unique learning experiences inside and outside the classroom, including our immersion experiences in Year 8 to 11, Integrated Learning in Year 7 to 10, annual whole-school Music Festival, a range of sports and extra-curricular opportunities, tailored outdoor educational experiences and more.

Our dedicated staff bring a diverse range of expertise and attentiveness to the individual needs of each student. We know that relationships are of utmost importance to student growth, and we prioritise the formation of an active and inspiring community of faith and social justice.

The success of our holistic model for education is proven by our consistent excellence in overall HSC results, which can be found on our website.

## Secondary School *at a glance*

### Year 7:

Develop independence and friendship as you transition to Secondary School.

### Year 8:

Think critically and collaborate in our ground-breaking subject Integrated Learning.

### Year 9:

Experience learning outside the traditional classroom on the Far North Queensland Experience.

### Year 10:

Be challenged to solve real world problems during Sprint Week and to foster connectedness during the Homelands Experience in Arnhem Land, Cape York and Central Australia.

### Year 11:

Step up as leaders of social justice through Loreto Day initiatives.

### Year 12:

Draw from holistic experiences to prepare for life beyond Loreto.

# Our award-winning model of education - the LNSGM

The renowned and proven Loreto Normanhurst Student Growth Model (LNSGM) is the cornerstone of our unique approach to holistic education. The LNSGM transfers to our FACE Curriculum, which places equal value on Faith, Academic, Community and Extra-curricular in the life of each student. For more information about our model of learning, please visit:  
[loretonh.nsw.edu.au/pages/learning-in-secondary](http://loretonh.nsw.edu.au/pages/learning-in-secondary).

“Loreto allowed me to foster a *love of learning*, whereby I was encouraged to ask questions and to explore *how* I learn, not just to learn the content.”

Lara Ciesiolka  
Class of 2020 Boarder





# Faith

*“THIS IS OUR VISION: THAT LORETO SCHOOLS OFFER A CATHOLIC EDUCATION WHICH LIBERATES, EMPOWERS AND MOTIVATES STUDENTS TO USE THEIR INDIVIDUAL GIFTS WITH CONFIDENCE, CREATIVITY AND GENEROSITY IN LOVING AND RESPONSIBLE SERVICE.”*

## Loreto Schools of Australia Mission Statement

The Catholic Christian faith is woven into all we do at Loreto Normanhurst. At our school, all people, irrespective of their faith, are invited to grow in their knowledge and love of God and to embrace the gospel.

Following the model of the Ignatian tradition, we set time apart from the ordinary to strengthen the spiritual, so that we may truly “find God in all things.”

A variety of experiences are offered at the school: the stillness of our midday reflection, early morning Communion Services, compulsory Sunday evening Boarder Mass, celebrations to mark the Church’s liturgical year and to bring every celebration in our school year into a context of prayer.

Students are immersed in an enlivening liturgical rhythm and are encouraged to see prayer and service as the source of all they do. The Spirituality and Chaplaincy program provides time and space for our community to collectively and individually explore our faith, with Spirituality Days and Retreats held for students and staff.





“Loreto taught me the strength of independence and self-determination while displaying acts of service and kindness to others through the school’s values and Catholic beliefs.”

Clare Stevenson  
Class of 2022 Boarder

# Academic

## **WE LEARN TO QUESTION THE WORLD**

Loreto Normanhurst provides a holistic education in which each student is challenged to develop her curiosity and capacity for self reflection.

A holistic education in accordance with the Loreto Normanhurst Student Growth Model is one that propels students into their futures. It requires them to be active and compassionate community members, to work effectively with peers and teachers, to have a strong faith which guides their decision making and to strive to achieve their personal academic best. This approach delivers outstanding academic outcomes for students, demonstrated in our consistent excellence in HSC results.

We aim to encourage our students to be life-long learners and critical thinkers who take ownership of their education and foster a broad, determined vision for the future. We are committed to engaging students in an ongoing process of proactive planning for life beyond Loreto Normanhurst through our dedicated Careers department.

Our Academic Enrichment Program seeks to meet the needs and celebrate the gifts of all students with the help of a Diverse Learning team, Learning Enrichment Faculty, Homework Help and Gifted and Talented Program.

## **Academic Care in the Boarding School**

The Loreto Normanhurst Boarding School provides an environment in which all girls can strive to reach their academic potential. Girls are encouraged to be consistent and reflective learners and to endeavour to set and reach individual academic goals. Our Boarding staff are mindful of the unique educational backgrounds of all our boarders and work to develop close relationships with the girls in their care and encourage and support them in their studies.

There are several staff available to the boarders onsite every evening for study including the Academic Care Coordinator, Homework Helpers, and teaching staff. New boarders in Year 7-9 have an Academic Mentor – a leadership position for our senior boarders. In addition to the available staff, we offer our boarders programs to help support them throughout their studies, including the Year 7 Mentor Program and the Homework Help Program which is offered to all boarders Year 7-12.

Study is fully supervised across Year 7-10 in classrooms close to the Library, while for Year 11 and 12, the girls are given the opportunity to complete their studies in their rooms or in the library.

## **Study Timetable**

Year Group	Monday to Thursday Study	Sunday Study
Year 7 - 9	5:00pm - 6:00pm 7:00pm - 8:00pm	4:00pm - 5:30pm
Year 10	5:00pm - 6:00pm 7:00pm - 8:30pm	4:00pm - 5:30pm
Year 11 - 12	5:00pm - 6:00pm 7:00pm - 9:00pm	4:00pm - 5:30pm 8:30pm - 10:30pm (Optional)



**Curriculum subjects offered  
at Loreto Normanhurst include:**

Aboriginal Studies, Agricultural Technology, Business Studies, Chinese (including Beginners, Continuers and Extension in Year 11 & 12), Commerce, Community and Family Studies (CAFS), Dance, Design and Technology, Drama, Economics, English (including EALD, English Studies and English Advanced, Standard, Extension 1 & Extension 2 in Year 11 & 12), Food Technology, French (including Beginners, Continuers and Extension in Year 11 & 12), Geography, History (including Ancient, Modern and Extension History in Year 11 & 12), Hospitality, Information and Processes Technology, Information and Software Technology, Italian (including Beginners, Continuers and Extension in Year 11 & 12), Languages and Cultural Studies, Legal Studies, Mathematics (including Standard, Advanced, Extension 1 & Extension 2 in Year 11 & 12), Music (including Music 1, 2 and Extension in Year 11 & 12), PDHPE, Physical Activities and Sports Studies (PASS), Religious Education, Science (including Biology, Chemistry, Physics, Investigating Science and Science Extension in Year 11 & 12), Sport, Lifestyle and Recreation Studies, Studies of Religion, Technology, Textiles Technology, Visual Arts, Visual Design.

# Community

“Boarding is central to our diverse and authentic Loreto community, where every girl is made to feel at home.”

Bridget  
Senior Boarder

## **PASTORAL CARE**

The aim of our strong Pastoral Care program in the Day and Boarding School is to know and guide each student to develop optimism, initiative, resilience, confidence and sound judgement in a supportive and connected educational environment. Each student enjoys a sense of belonging and security in her House, which is led by staff and student leaders and forms the basis of Pastoral Care structures. The Secondary School has eight Houses with a vertical Tutor Group system. A student and her Tutor or Advisor engage in regular one-on-one conversations to encourage reflection on a student's growth.

The school also has a dedicated Pastoral Care leadership team, including the Director of Pastoral Care and Heads of Houses, as well as school counsellors onsite.

A key aspect of Pastoral Care at Loreto Normanhurst is the opportunity for student leadership in Year 11 and 12. Year 11 leaders choose a cause and facilitate awareness-raising and fundraising for the annual Loreto Day. The elected Year 12 Student Council work alongside staff to promote the Loreto charism in daily student life.

## **OAKSEED**

This bespoke wellbeing program, developed in consultation with leading child psychologist Dr Danielle Einstein, develops five core social and emotional competencies that support learning and development: self-awareness, self-management, responsible decision-making, relationship skills, and

social awareness. The OakSeed program consists of learning experiences delivered holistically within the Intergrated, PDHPE and Pastoral curriculums.

## **'IT TAKES A VILLAGE' - PARENT ENGAGEMENT AND EDUCATION PROGRAM**

We know that a strong partnership between our school and families is of utmost importance to the wellbeing and growth of our students. Parents are firmly involved in their daughter's learning and Pastoral development through regular meetings called Plenaries with teachers and Tutors/Advisors.

We are also pleased to offer a series of expert seminars and workshops through our Parent Engagement and Education program.

## **PASTORAL SUPPORT IN BOARDING**

Within the Boarding School there is a strong culture of security and social connectedness, and a positive outlook is actively encouraged and fostered. With our Pastoral Care structure, we aim to make the boarders feel that they have amazing opportunities for social, emotional, and academic growth while also making them feel they are supported to develop into independent, mature, creative, and confident young women.

The Leadership Team in boarding consists of the Director of Boarding and the Dean of Boarding. This team provides strategic direction and manages the creation and implementation of programs to assist boarders' academic and pastoral growth and development.



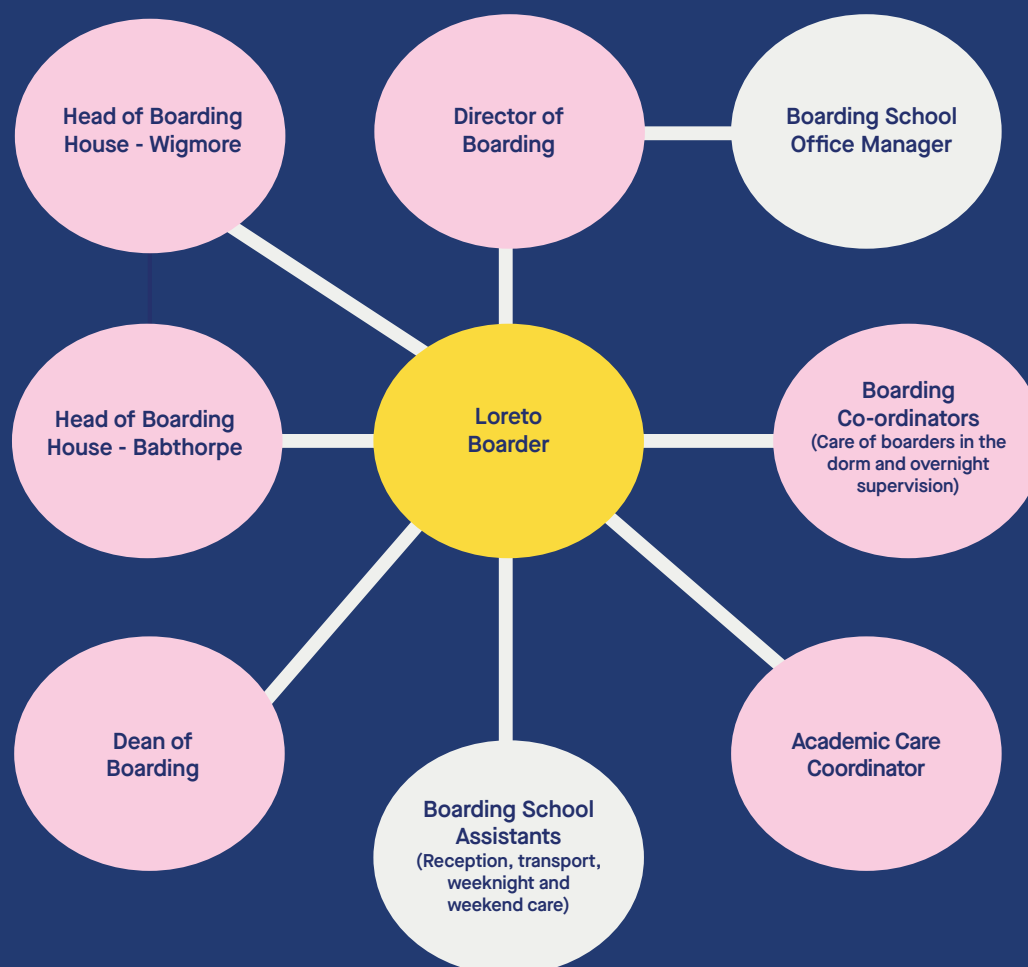
The wider boarding team includes the Boarding Heads of House and the Academic Care Coordinator who provide a high level of support and care for boarders and their families.

Each dormitory has a Coordinator who works with the boarders to provide a safe and secure environment for them to live. They are supported by Boarding Assistants and GAP Assistants.

Other staff who are essential to the running of the Boarding School include office staff and a Nursing Team before and after school hours.

The Boarding House system mirrors and complements the Pastoral Care structures of the Day School. This provides an amazing level of care and security for every Loreto Boarder.

At the beginning of each year parents will be provided with a list of key contacts to approach if they have any worries or concerns regarding their daughter.



# Community (Continued)





## **TRANSITION TO BOARDING & ORIENTATION PROCESS**

The following programs are just some of the supports in place to assist your daughter to settle into boarding.

### **Prior to Term One:**

Orientation Handbook - your daughter will receive a comprehensive 'Preparing for Boarding' Handbook to prepare her for the start of her boarding journey.

We value our partnership with families and the following supports are in place to ensure a seamless transition to boarding for both the student and her parents. New Year 7 boarders are welcomed into our community by the current Year 6 students, who will become their classmates in Year 7. This is a fun and relaxed way to meet each other and become acquainted with the school.

They also enjoy a sleepover experience in the Boarding School to become familiar with the boarding experience. In this orientation, students and their families are made aware of the support services available, as well as more practical arrangements such as uniform fittings.

### **Start of Term One:**

A vibrant buddy system providing inter-year relationships between the day and boarding school, guidance and friendly support from the get-go!

A mentoring program to find connection with a senior boarder who acts as an 'older sister' within the boarding community.

Around the clock access to our Counselling service, a team of professionals who remain connected to your daughters throughout their journey at Loreto. Your daughter will meet the team to learn about the services available to them as a Loreto Normanhurst boarder.

## **COMMUNICATION**

We know our boarders and their parents love to stay in touch. There are several ways to keep in touch throughout the year.

### **Boarding School Communication**

There are many communication channels the school uses to connect with our boarder families.

#### **Boarder Parent Committee**

The Boarder Parent Committee consists of parent representatives, the Principal and Director of Boarding, and facilitates communication, updates and suggestions, as well as social functions.

#### **Boarder Facebook Group**

Parents and boarders are invited to become members of the Boarder Facebook group to keep up to date with photos and activities.

### **Technology**

Loreto Normanhurst has a strict mobile phone policy, and the Boarding School has additional policies in place around the use of mobile phones, laptops and other smart devices, as well as policies around social media use and technology free times.

# Extra-curricular

## *WE LEARN TO TAKE A DIFFERENT PERSPECTIVE*

Loreto Normanhurst prides itself on being a school where all students can find a way to succeed and shine in one or many areas. We have an extensive Extra-curricular program which equips our students with the ability to be innovative, creative and empathetic and teaches them the value of teamwork and how to deal with failure.

Our extra-curricular program offers students a range of opportunities to have fun and to discover what they are passionate about. Every Loreto Normanhurst student is encouraged to pursue a variety of extra-curricular activities throughout their school years.

The school supports the many students who participate at an elite level in their chosen extra-curricular pursuit including sport, music and dance.

Boarders balance their academic pursuits with a variety of extra-curricular activities, including arts, debating, oratory and sport. Our Year 7-10 girls participate in compulsory weekly Saturday Sport and most of our senior girls elect to continue to be part of sporting teams in Year 11-12. Additionally, boarders take on many leadership opportunities, including the Boarder Council, Chapel Ensemble, Table Heads and Academic Mentors.

## *WEEKEND PROGRAMS AND ACTIVITIES FOR BOARDERS*

### **Commitment Weekend**

Commitment Weekend is a key foundation of the culture of the Boarding School. It occurs on the first weekend of the school year and sees all boarders and staff engage in community building activities. Leave is not granted on this weekend.

### **Community Weekends - Term Two - Four**

Community Weekends continue through Terms 2-4, strengthening the culture of the Boarding School with boarders and staff

### **Extra-curricular activities offered at**

#### **Loreto Normanhurst include:**

Chess & Strategic Games, Debating & Public Speaking competitions, Ethics Olympiad, Extensive range of sport opportunities, Green Team, Immersion and tour opportunities, JPIC Social Justice Group, Mock Trial & Mock Mediation, Music Ensembles and Choirs, Philosophy club, Photography Club, Private Music Tutelage, Student Newspaper, Textiles Open Studio, Visual Arts Open Studio, Yearbook Committee.





engaging in activities, excursions and events. Parents receive these dates well in advance to make their personal plans for the year ahead. All boarders are required to remain at school from Friday across the weekend. Only Sport Leave will be granted.

#### **Recreation Program (Year 7 & 8)**

On weekends, Year 7 and 8 engage with a compulsory recreation program. This program includes a range of on and off-site activities, ensuring our younger boarders have enjoyable weekends making memories with new friends. At the end of each term, the activities and requirements for the upcoming term will be communicated to families.

#### **Activities Program (Year 7-12)**

On some weekends, non-compulsory activities will be organised for all boarders to participate in. At the end of each term, the activities and requirements for the upcoming term will be communicated to families.

#### **Saturday Sport**

Sport is compulsory for Year 7-10 boarders and is an enjoyable pillar of the school culture. A range of sports are available for boarders to choose from and most include a Saturday morning commitment. Leave arrangements from boarding do not exempt boarders from attending sport. Boarders are also expected to organise their own transport to Saturday commitments, via school bus, public or private transport. Day families are encouraged to offer travel assistance to boarders.

#### **Weekend Leave**

Leave will be permitted on any weekend apart from those listed above, at the discretion of the Director of Boarding. Leave can be refused if the proposed arrangements are deemed unsuitable or unsafe, in order to maintain the wellbeing of boarders. The Boarding School uses an electronic leave management system, REACH, which can be accessed by parents, boarders and Boarding School staff.

**“As we move to life beyond Year 12, we know the importance of kindness and of speaking our truth, of standing up for ourselves and for others.”**

**Grace Gillies & Lillian Dean**  
Class of 2021 School Captains

Start here.  
Go anywhere.





# A Day in the Life of a Boarder



**6:30am**  
Optional Morning  
Sport Training



**7:00am**  
Wake up



**7:30am**  
Breakfast



**8:15am**  
Depart for School



CLASS



CLASS

**10:30am**  
Morning Tea on the  
Oak Tree Lawn

**12:35pm**  
Lunch

CLASS



**3:15pm**  
Afternoon tea



**3:30pm**  
Extra-curricular Activities  
& Leisure Time



**6:00pm**  
Dinner



**5:00pm**  
First study for Year 7-12



**7:00pm**  
Second Study  
for Year 7-12



**9:00pm**  
Leisure time &  
Lights Out (Screen Free)



# FRIDAY

3:15pm  
Weekend Leave Begins



6:00pm  
Dinner



6:30pm  
'Lolly Nun'  
Dessert Trolley



# SATURDAY

From 5:30am  
Saturday Sport



1:30pm  
Leisure Time



12:30pm  
Lunch



From 6:00am  
Breakfast

# SUNDAY

From 7:00am  
Breakfast



7:30pm  
Year Group  
Activities



10:00am  
Sunday Brunch



5:30pm  
Dormitory Clean Up



4:00pm  
Study



11:00am  
Recreation & Activities Program



5:45pm  
Dinner



6:30pm  
Weekend Leave  
Concludes



7:00pm  
Boarder Mass



9:00pm  
Leisure time  
& Lights out  
(Screen free)

# A Weekend in the Life of a Boarder

# Our Campus

At Loreto Normanhurst, we take pride in our school and this is reflected in our well-maintained campus which contains the full range of facilities necessary to cater for all areas of study and interests.

The school is set in spacious grounds of over 25 acres, on the edge of bushland, and is a pleasant mix of historic and modern buildings. The beautiful ovals, well-tended gardens, playgrounds, tennis and basketball courts, Gymnasium, Fitness Centre, and Aquatic Centre with a 25-metre indoor swimming pool, make up the superb facilities that support our students.

Our facilities incorporate the traditional, heritage buildings that can house over 200 boarders, to our modern facilities for Science and Integrated Learning. The Gonzaga Barry Centre was opened in 2013 and is a state-of-the-art teaching and learning facility with flexible and multi-purpose spaces.

Other facilities of note include the Chapel, built in 1953, and the Library which was built in 2000, and houses an extensive collection of fiction, non-fiction, and diverse electronic and printed educational resources.

## **Health Centre**

The Mary Ward Health and Wellness Centre is open from 8:00am until the end of the school day (Mon-Fri) and is staffed by three Registered Nurses, five School Counsellors and a First Aid qualified receptionist. In addition, the Nurses provide first aid to students and to staff daily and are also available for advice in person or over the phone. The Health Centre offers after hours support until 9:00pm Monday to Friday and for limited hours on weekends.





Flexible Learning Spaces



Mother Evangeline Kendall  
Visual Arts Centre



Chapel



Mary Ward Health  
& Wellness Centre



Library



Gymnasium &  
Hayden Fitness Centre



Veronica Reid Oval



Aquatic Centre



Tennis, Basketball &  
Multi-purpose Courts



Drama Space

# Boarding School Accommodation

*“I love living here because you’re just with your friends all the time and it feels like a family away from home.”*

Alice  
Senior Boarder

At Loreto Normanhurst we pride ourselves on providing a safe and secure environment for all our boarders.

We offer multiple communal lounge areas for our boarders to relax and socialise with their peers. The Boarders’ Dining Room is another communal area where the girls have the opportunity to sit together for meals from breakfast to dinner.

Our boarders experience a range of dormitories to best support the needs of their year groups.

- Year 7 and 8 share three large dormitories. Our junior boarders enjoy shared accommodation, which fosters the strong sense of sisterhood they experience as boarders, and they enjoy the benefits of communal living and relationship building.
- Year 9 are in shared rooms of 2, 3 or 4 girls.
- Year 10 and 11 are in single rooms with some shared.
- Year 12 enjoy single rooms.



We invite you to visit our website to explore the Virtual Tour of our Boarding School, or to book a tour onsite for your family.



# Our Master Plan

Loreto Normanhurst has been developing a Master Plan to guide the planning of the campus over the next 30 years.

The school's growth is planned over four stages delivered across the 30 years. The overall proposal aims to increase the student capacity incrementally by 850 students by the year 2047.

The Master Plan will unfold with the gradual redevelopment or replacement of current buildings to create an innovative, unified, sustainable, and ecologically sensitive campus.

By updating our spaces and surroundings, our Master Plan helps us build our community and propel our students into their futures as 'compassionate warriors.'

2022 saw the completion of collaborative learning spaces in the Mary Ward Centre, the opening of St Michael's Tennis Courts and a new traffic





management system, amongst other exciting projects. In 2023 our focus will be on 3 key areas:

1. The construction of our new Agricultural Technologies Centre, due to be opened in Term 3 2023.
2. The development of our new Boarding School, due to open in 2025.
3. Planning for the upgrade of the Veronica Reid Oval and for the repurposing of the buildings and spaces which are currently occupied by Boarding.

#### **Our New Boarding School**

The vision for our new Boarding School is a lively home away from home containing a variety of spaces that set the stage for the rhythms of boarding life.

The new building will feature common gathering spaces for social and recreational use, communal areas for boarding families, updated accommodation for boarding staff and improved accessibility for students with specific access needs.

The expanded facilities will position areas of the Boarding School as a resource for everyone in the school and will enrich the friendships, opportunities, and experiences available to students and all members of our community. A large dining room will allow boarders to eat together and, during the day, will also welcome day students to the cafeteria. Large, tiered seating will be a perfect location for group chats, quiet reading or studying, or school choir rehearsals.

A family lounge will allow for families to visit their daughter and will give them a comfortable and inviting space to sit together. Multiple common rooms on each floor will have lounge and TV areas, games areas and some cooking facilities to allow boarders to prepare a quick snack or cook a batch of biscuits together after school. We will have quiet spaces including a study hub, outdoor teaching areas and music rehearsal rooms.

The Boarding School has a planned opening in 2025.

# Bursaries and Scholarships

Thanks to the generosity of donors, the Bursary and Indigenous Scholarship programs have helped us offer incredible facilities and resources, unique and industry-leading learning programs, the expertise and care of dedicated staff and a loving community to girls who would otherwise face barriers to such an education.

Loreto Normanhurst offers a number of Bursaries and Scholarships each year to girls entering Year 7 to 11.

Application details can be found on our school website.

## Bursaries

In any given year, we have families who find themselves in necessitous circumstances, including those affected by drought, bushfires and the COVID pandemic.

The Bursary Program provides full or part bursaries allowing us to serve families from diverse locations and backgrounds. The school has bursary places available to support families in need and the educational aspirations of their daughters.

## Indigenous Scholarships

Loreto Normanhurst also supports a number of Aboriginal and Torres Strait Islander students seeking to maximise their educational outcomes through the Indigenous Scholarship fund. This program is supported by generous donations to the school's Indigenous Scholarship fund and in its partnership with the Australian Indigenous Education Foundation (AIEF).

“Loreto boarding is so special because of the connections you form... as well as that tradition of community spirit; the *generations of women* that we're following.”

Charlotte  
Senior Boarder



For more information, visit our website to:

[Review the Enrolments Guidelines](#)  
[Review our Fees and Charges](#)

[Book an Onsite Boarding Tour](#)  
[Find out about Scholarships and Bursaries](#)

For further enquiries, please contact:  
enrolments@loretonh.nsw.edu.au or call +61 2 9473 7371

Enrolment is as easy as  
**1, 2, 3, 4, 5!**



# How to Apply

The following information is the standard process to follow for enrolment at Loreto Normanhurst. Boarder applications are given preference in Year 7-11 and families are encouraged to contact the Enrolments Team for entry outside these guidelines.

Our main intake year for Boarding is Year 7. We welcome applications for entry to other cohorts dependent on availability and at the Principal's discretion. We commence with the enrolment process a little over two years in advance for our Year 7 intake; and one year in advance for all other years. We encourage all families to apply as early as possible to secure a place on our waiting list.

Applications are subject to availability at all stages of the enrolment process. Priority is given to alumnae, to those with sisters already attending, and to country boarders.

## 1 Application

We encourage the early submission of applications (accepted from birth). The Application for Admission form must be completed and submitted together with the student's Birth Certificate and Australian Proof of Citizenship (if applicable) and payment of the non-refundable Application Fee for the student to be placed on the waitlist.



## 2 Enrolment | 📅 July

At the commencement of the Enrolment Process, two and a half years prior to year of entry, families will be invited to attend a Parent Information Evening and may be invited to complete and submit the Enrolment Documentation.



## 3 Interview | 📅 December - March

Prior to year of entry, families may be invited to attend an interview with the Principal or a member of the Leadership Team.



## 4 Offer | 📅 February - April

Upon successful completion of the interview process, offers of places are made, subject to availability and at the discretion of the Principal.



## 5 Acceptance of Offer

Parents will then be given the opportunity to accept an Offer of Confirmed Enrolment by signing the Acceptance of Enrolment Agreement and paying the non-refundable Enrolment Fee.



91-93 Pennant Hills Road  
Normanhurst NSW 2076  
Australia

[www.loretonh.nsw.edu.au](http://www.loretonh.nsw.edu.au)

[enrolments@loretonh.nsw.edu.au](mailto:enrolments@loretonh.nsw.edu.au)

1800-LORETO



This cover is printed on  
100% recycled paper.



Loreto  
Normanhurst

August 2023